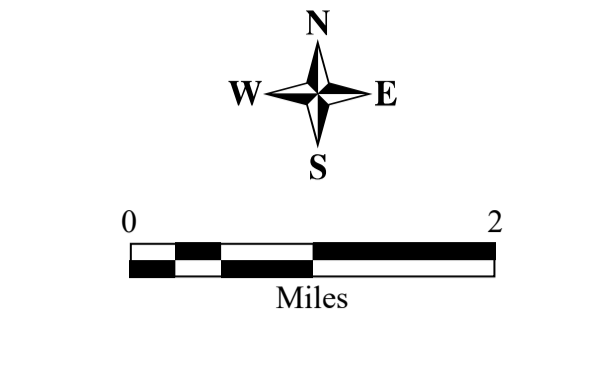
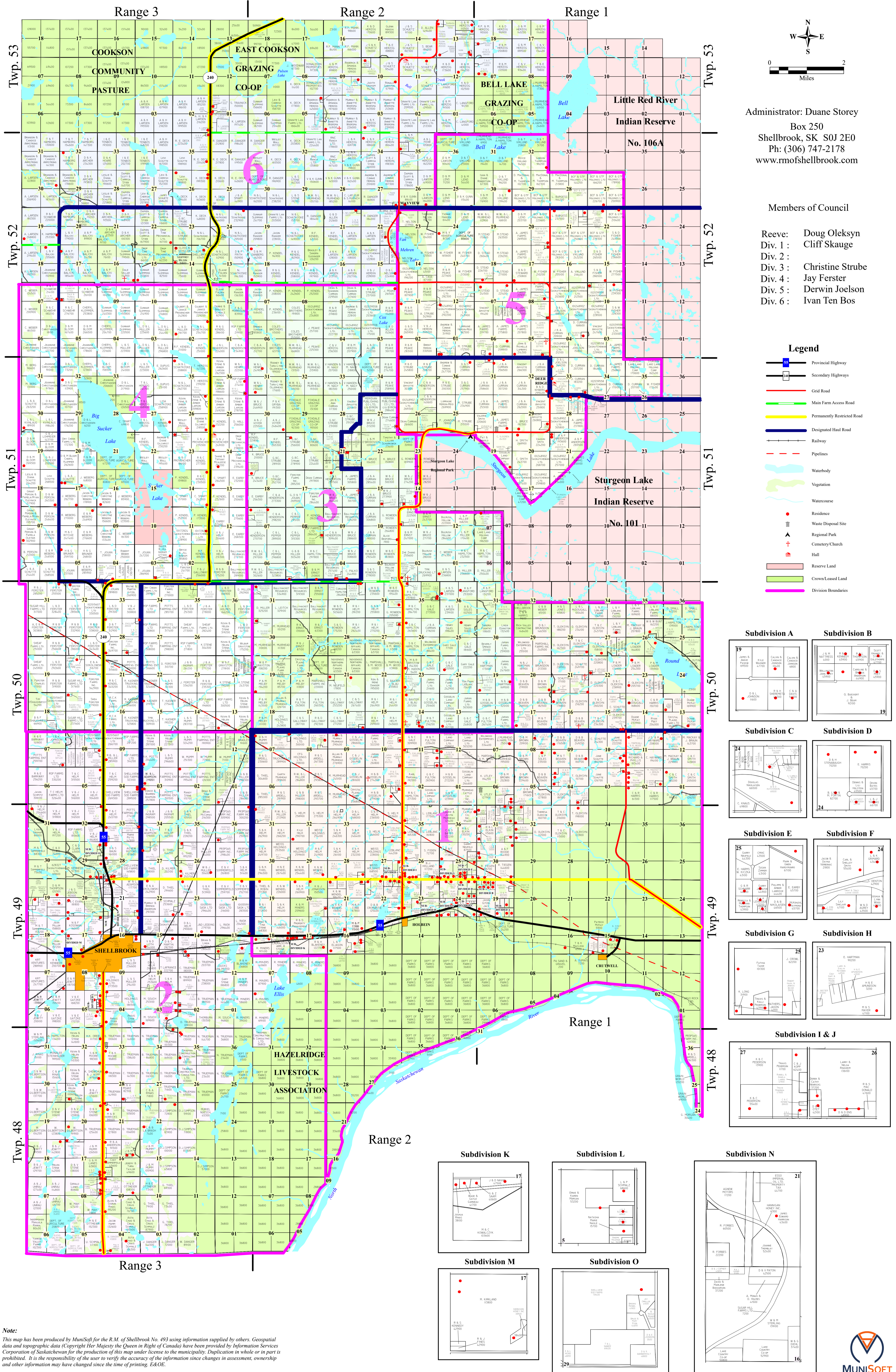


# RURAL MUNICIPALITY OF SHELLBROOK No. 493

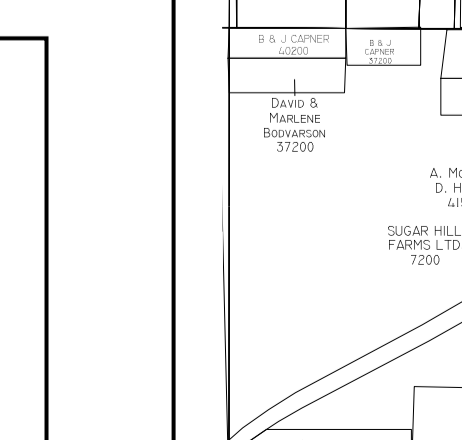
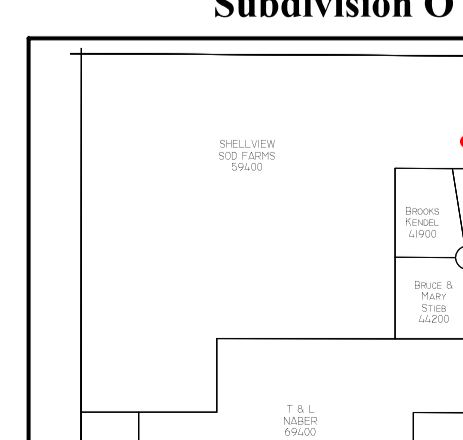
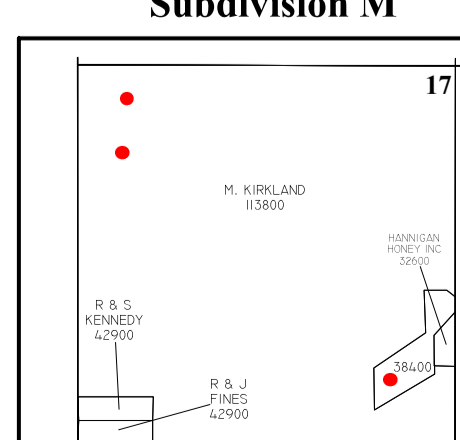
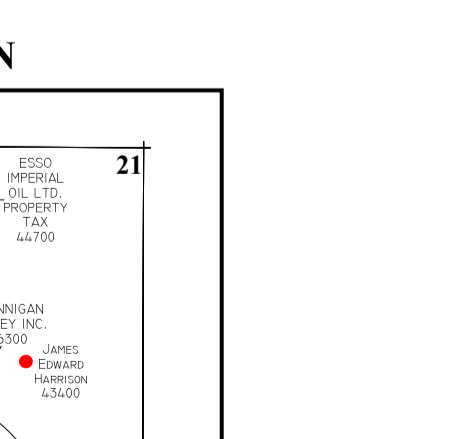
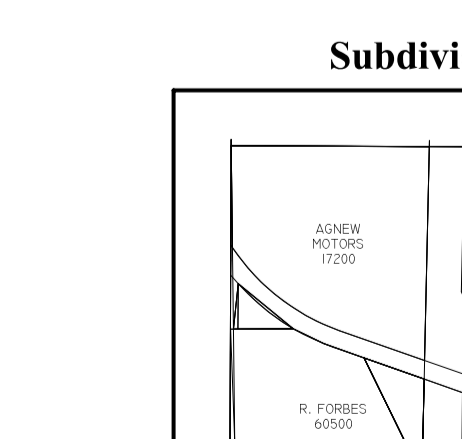
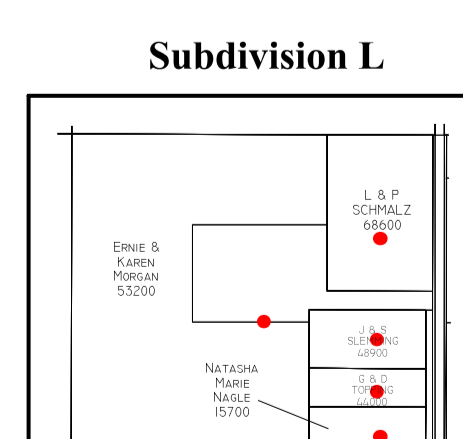
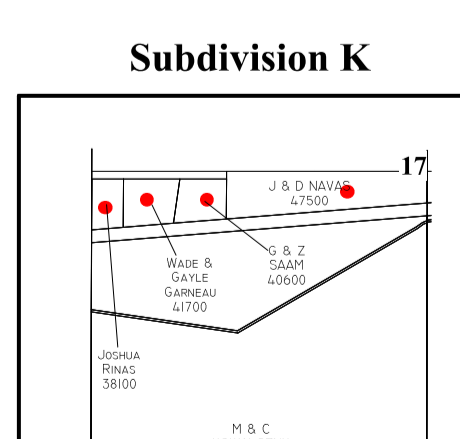
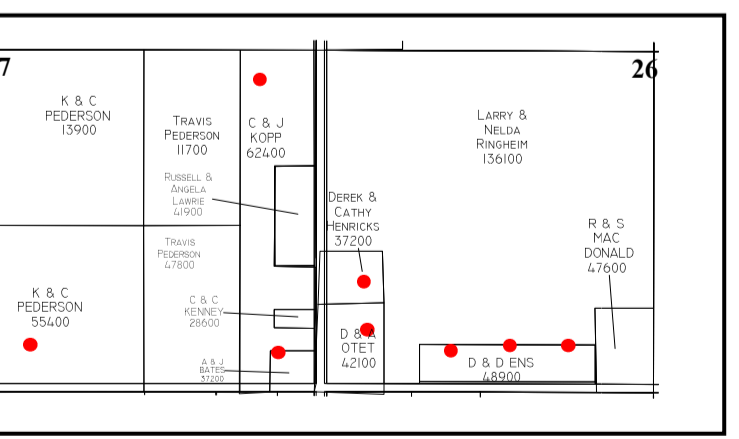
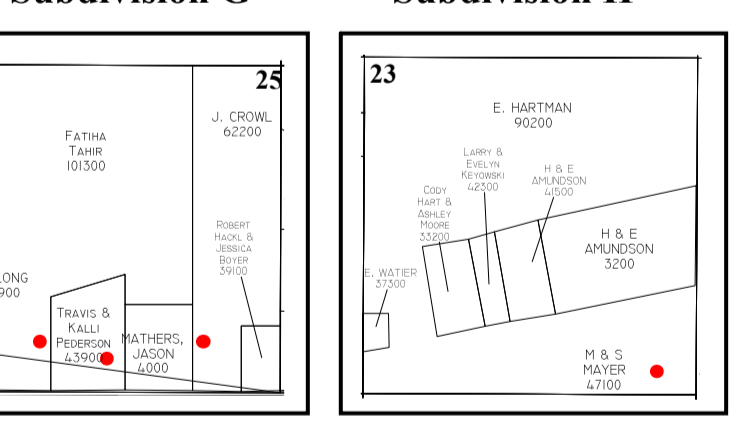
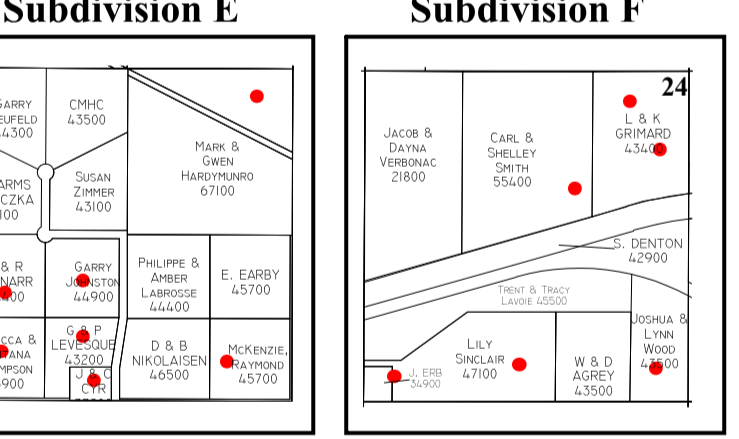
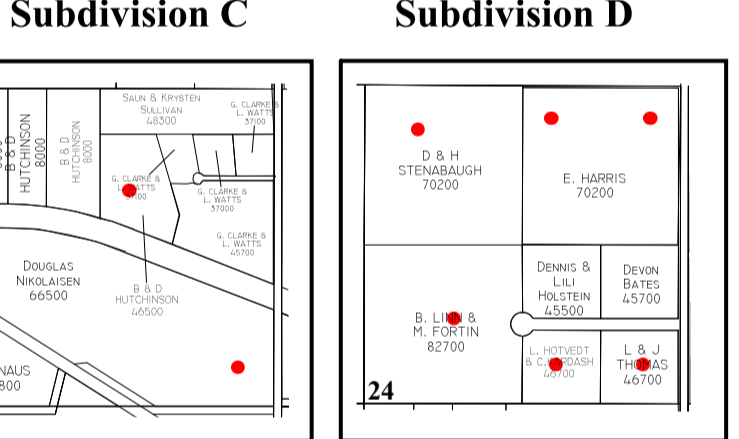
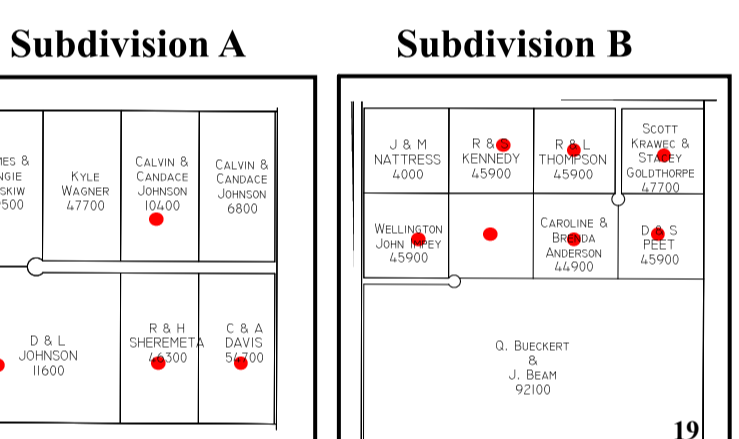
WEST OF 3rd MERIDIAN



Administrator: Duane Storey  
Box 250  
Shellbrook, SK S0J 2E0  
Ph: (306) 747-2178  
www.rmofshellbrook.com

Members of Council  
Reeve: Doug Oleksyn  
Div. 1: Cliff Skauge  
Div. 2: Christine Strube  
Div. 3: Jay Ferster  
Div. 4: Derwin Joelson  
Div. 5: Ivan Ten Bos

- ### Legend
- Provincial Highway
  - Secondary Highways
  - Grid Road
  - Main Farm Access Road
  - Permanently Restricted Road
  - Designated Haul Road
  - Railway
  - Pipelines
  - Waterbody
  - Vegetation
  - Watercourse
  - Residence
  - Waste Disposal Site
  - Regional Park
  - Cemetery/Church
  - Hall
  - Reserve Land
  - Crown/Lessee Land
  - Division Boundaries



Note: This map has been produced by MuniSoft for the R.M. of Shellbrook No. 493 using information supplied by others. Geospatial data and topographic data (Copyright Her Majesty the Queen in Right of Canada) have been provided by Information Services Corporation of Saskatchewan for the production of this map under license to the municipality. Duplication in whole or in part is prohibited. It is the responsibility of the user to verify the accuracy of the information since changes in assessment, ownership and other information may have changed since the time of printing. E/06.

Update November 2021  
Printed December 2021

